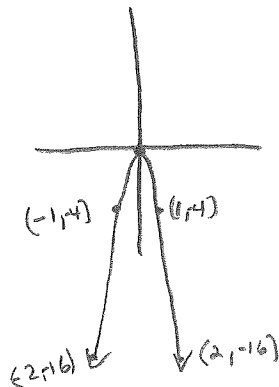


⑦ vertex (2,3)
maximum

⑧ vertex (-3,-2)
minimum

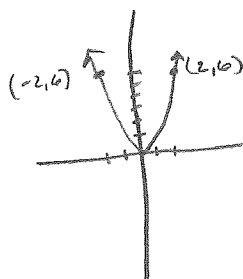
⑨ vertex (2,1)
minimum

⑩



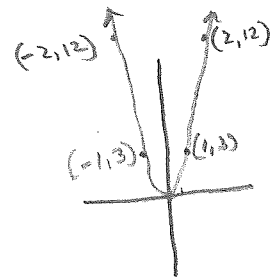
domain: all real numbers
range: $y \leq 0$

⑪



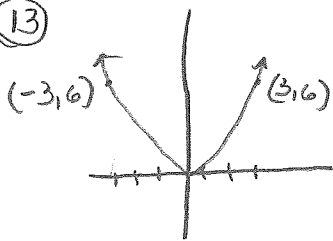
domain: all real numbers
range: $y \geq 0$

⑫



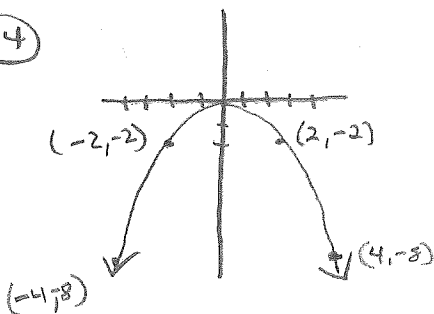
domain: all real numbers
range: $y \geq 0$

⑬



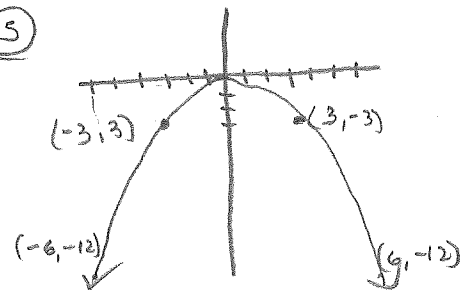
domain: all real numbers
range: $y \geq 0$

⑭



domain: all real numbers
range: $y \leq 0$

⑮



domain: all real numbers
range: $y \leq 0$

⑯ $y = 2x^2, y = 3x^2, y = 4x^2$

⑰ $f(x) = x^2, f(x) = -3x^2, f(x) = 5x^2$

⑱ $y = -\frac{1}{4}x^2, y = -\frac{1}{2}x^2, y = 5x^2$

⑲ $f(x) = -\frac{2}{3}x^2, f(x) = -2x^2, f(x) = -4x^2$

⑳ They forgot to apply the negative to their calculations. the negative 'a' indicates the graph will face downward.

⑳ B ㉑ D ㉒ E ㉓ F ㉔ A ㉕ C